

Uinta County School District #6

Lyman, Wyoming



**Annual Calendar
and
School District
Report Card
August 2013**

Board of Trustees

James D. Eyre – Chairman
Todd Rollins – Vice-Chairman
Sherri Bluemel – Clerk
Chad Martin – Treasurer
Bart Lyman – Member

Telephone Numbers

District Office 786-4100 ext. 4101
High School 786-4100 ext. 5101
Intermediate School 786-4100 ext. 6101
Urie Elementary 786-4100 ext. 3101
Special Services 786-4100 ext. 4113
Maintenance 786-4100 ext. 4111
Technology Dept. 786-4100 ext. 4114
Food Services 786-4100 ext. 4106
Bus Barn..... 786-4100 ext. 6144
Aquatic Center 786-4100 ext. 5134

This booklet is published each summer to provide information to parents and community members about the Lyman School District. It contains information about extra-curricular activities, food services, transportation, and the school calendar. **Occasionally there are changes to the calendar after this booklet is printed. A current school calendar can be found at the school district web site** www.uinta6.k12.wy.us. We want to provide your student the very best education possible in a warm and inviting environment. We will work hard to accomplish this goal and to keep you informed and up to date on school schedules and activities.



Four Day School Week

Lyman School District has adopted a four day school week. Please keep this in mind when scheduling appointments, making vacation plans, etc. We truly appreciate efforts made in this regard.

School Starting and Ending Times

School	Starting Time	Ending Time
Urie Elementary	8:15 AM	3:30 PM
Lyman Intermediate	8:00 AM	3:50 PM
Lyman High School	8:00 AM	4:00 PM

Medication Policy

Students are not permitted to take medication during school hours unless it is administered by the school nurse, school secretary, principal, or designee.

Medication administration during school hours is not legally required, and is considered an accommodation on the part of the school. "All medication" includes over-the-counter, prescription drugs, inhalers, and insulin. However, students are allowed to carry medications for life threatening conditions (asthma inhalers, epinephrine, insulin, etc.) with them, provided the school has a signed, parental and physician verification that the student is responsible for and capable of self-administration of such medication. Homeopathic/herbal remedies will not be administered by school personnel; however, parents/guardians may come to the school and administer them to their children. Administration of any medication during school hours requires a written administration of medication form, signed by the parent or guardian. A physician signature may be required for certain medications, at the discretion of the school nurse. This request to administer medication releases the district from the consequences of such medication. This policy covers all medication, including over-the-counter, prescription drugs, inhalers, and insulin. Analgesics, such as ibuprofen and acetaminophen may be given at the discretion of the school nurse, provided written authorization of the parent/guardian is on file. All medication must be provided by the parent, in a pharmacy-labeled or manufacturer's original container. Medication shall be stored in a locked cabinet, and access shall be limited to school nurses, school secretaries, principals, or trained adult designees.



Goals and Activities to Improve Student Achievement

Urie Elementary

The overall goal of Urie Elementary is always to improve student learning. More specifically, the goal is to increase the number of student's proficient on the PAWS test by at least 5% in the areas of language arts, math and science.

The focus for 2012-2013 was primarily in establishing extra help for students to reach benchmark scores in every program. We also work a lot on reading and writing with help from an excellent consultant. This year we will focus a lot on improving reading comprehension curriculum. Urie Elementary staff will continue working in professional learning groups, which we will continue next year and into the foreseeable future. We will continue to look at test results from a variety of tests: MAP, AIMS Web, and PAWS to see where students are doing well and not so well – and try to make necessary adjustments in our teaching. Based on student achievement results, the staff will consider areas of focus to improve student learning.



Lyman Intermediate School

For the school year 2013-2014, LIS goals remain: “All students will improve their reading comprehension skills,” and “All students will improve their math computation skills.” LIS efforts to achieve these goals include a continued emphasis on brain-based approaches and strategies in all subject areas. Beyond this, the teachers have been trained in reading comprehension strategies as well as reading in the content areas. We also continue to train with literacy coach Mary Thrasher, who has worked with us primarily in writing, but whose work with us will now emphasize the teaching of reading. As a part of the “Response to Intervention” approach, our newest initiative is to double up on reading time for struggling readers. We will teach reading through social studies for students identified as needing reading remediation at each grade level.

Reading students are also scheduled to receive weekly “Read Naturally” lessons, and Title I and special-needs students are scheduled into Wilson Reading, a program that improves decoding and reading comprehension. We have also started a new program from the Wilson Reading “people,” called Just Words, for select sixth and seventh graders.

We will continue leveling math classes, something which allowed more significant growth than we’ve ever experienced. Mr. Milo Walker piloted the use of Student Response Systems, affectionately known as “clickers,” in 2010, and now more classrooms have this technology available and are utilizing the systems. The clickers are particularly helpful at assessing student understanding of concepts being taught as they are being taught, so the teacher has the ability to review and reteach as is necessary. Because math is a top priority, the district has adopted the Singapore Math program K-6 beginning 2013-2014. Teachers will undergo intensive training in this new approach.

The staff at LIS continues to assess students, study the data, and make changes each year. This year we will continue to study formative assessment strategies in the hopes that we will even better meet the needs of students.

LIS offers academic study hall, Eagles Quest, AB Try Again, and after school study help for all students so that they can receive individual attention from their teachers. We also have a well-attended and successful Friday School for students who have struggled to achieve proficiency on the state test or in their classrooms.

Lyman High School

Lyman High School is in the process of adopting the common core standards to provide a consistent and clear understanding of what students need to learn to prepare them for college or careers. Currently, language arts and mathematics are the areas adopting these standards.

Character education will be incorporated school wide on a weekly basis. Lyman High School will provide character education that will foster ethical, responsible and caring young people by modeling and teaching good character through an emphasis on universal values that we all share. Small groups of students in mixed grade levels will work with their teacher completing lessons focused on respect, responsibility, courage, integrity, etc.

Extra-Curricular Activities

Studies show that one of the best indicators of future success is involvement in extra-curricular activities while in school.

Each school within the district encourages students to find something they enjoy and become involved in activities at school. Most students are involved in at least one activity each year, and many students participate in several activities.

The district offers a wide variety of activities at both the High School and Intermediate School. Encourage your child to choose something they like and get involved. They will love it!

High School

Basketball	Drama	Jazz Band	Golf
Cheerleading	Swimming	Drill Team	Football
Cross-Country	Speech	Wrestling	Volleyball
Swing Choir	Track	FCCLA	FFA
Skills USA			

Intermediate School

Basketball	Football	Swimming	Track
Cross-Country	Volleyball	Wrestling	Chess
Spelling Bee	Academic Bowl	Skills USA	
Missoula Children's Theatre			

Activities

A \$20 fee (\$100 maximum per family) will be charged for each activity. If you are unable to pay the fee, please contact the Activities Director (Jim Levine) at Lyman High School. On teams where there are tryouts, the participation fee will not be due until the final selection is made.

The purpose of high school activities and athletics is:

1. To strive always for performing excellence.
2. To provide growth and development opportunity for each student.
3. To teach character, honesty, and integrity.
4. To provide opportunity for young people to recognize their talents and develop them through commitment and hard work.
5. To develop cooperation and teamwork.
6. To teach good sportsmanship.



Be a Good Sport!!

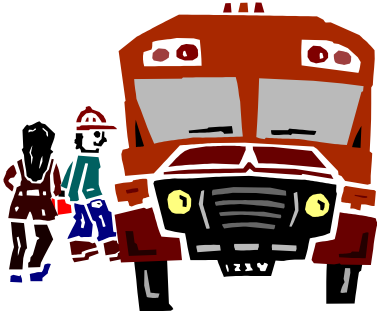
WHSSA rule 3.5.1 states, “Participants are guests of the host school/community, and as such should conduct themselves in an exemplary manner. Prior, during and following an activity, unsportsmanlike conduct will not be tolerated.”

WHSSA rule 3.5.4 states, “Unsportsmanlike conduct by coaches, student body, and/or spectators may also cause the offending school to be warned and/or placed on probation for the first offense. The second offense may cause probation and/or suspension for one-year period.”

PowerSchool Information

Student assignments, current grades, absences, etc. may be obtained by logging on to the school district web site at www.uinta6.k12.wy.us. Parents and students will be given specific information as to their access number.

Transportation



Uinta County School District #6 has a fleet of 17 buses to provide transportation to students. Routes and times are published in the *Bridger Valley Pioneer* each year prior to the beginning of school.

Drivers

Each driver receives training each year, has medical clearance, and is licensed by the state of Wyoming before driving with

children on the bus. Buses on all routes are equipped with radios, which allow for immediate contact with help in case of an emergency.

Hazardous Areas

In nearly all cases, we do not attempt to stop traffic for children on the left side of the roadway. Children must be on the right side of the roadway at the designated bus stop. The school district does not have personnel to supervise bus stops. Parents' presence at bus stops will keep most situations under control. If situations need attention, please call the Transportation Director, Bruce Bluemel, at 786-4100 ext. 6144.

Adverse Weather Conditions

During blizzard conditions, children will be required to go to a safe "haven" or location. Drivers are instructed not to leave small children at bus stops where they may be in danger. Drivers are instructed to take the children back to their respective schools. Parents will be notified, and arrangements will be made for their pick-up or delivery.

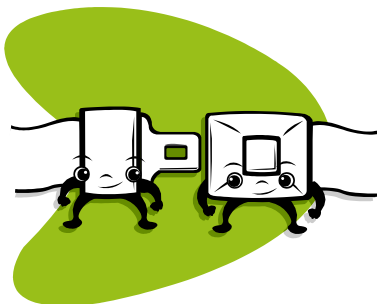
If weather conditions are such that school is cancelled, a code red will be issued and you will be contacted by phone.

If your telephone number has changed, please contact the District Office so that we have your current number.

In addition, radio stations will be notified and will broadcast information about closing, or late start as early in the morning as possible: •KMER - 950 AM •KSIT - 104.5 FM •KQSW - 96.5 FM

Safety

The greatest safety measure that can be performed by parents is careful attention to buses with flashing red lights. Parents should not enter bus loading zones with their personal vehicles.



Video and Audio on the Bus

Some buses are equipped with video and audio systems. Recordings from these may be used by the district as evidence in disciplinary actions.

Bus rules

The bus driver is in charge of the bus, and passengers are expected to obey him/her promptly and cheerfully. Bus transportation privileges can be taken away if serious and recurring problems develop during the year.

Family Educational Rights and Privacy Act

Generally, schools must have written permission from the parent or eligible student in order to release any information from a student's educational record. However, FERPA allows schools to disclose those records, without consent, to the following parties or under following conditions (34 CFR § 99.31).

Uinta County School District Number Six will release records under the following conditions:

- School officials with legitimate educational interest;
- Other schools to which a student is transferring;
- Specified officials for audit or evaluation purposes;
- Appropriate parties in connection with financial aid to a student;
- Organizations conducting certain studies for or on behalf of the school;
- Accrediting organizations;
- To comply with a judicial order lawfully issued subpoena;
- Appropriate officials in cases of health and safety emergencies; and
- State and local authorities, within a juvenile justice system, pursuant to specific state law.

Food Services Information

All schools are offered an A-line and a B-line choice each day.

A-line is the published menu.

B-line:

- Grades K-5 are offered one choice
- Grades 6-8 are offered two choices
- Grades 9-12 are offered three choices



All lunches include the Health Bar where a variety of fruits and vegetables are offered daily.

Each lunch includes a choice of non-fat chocolate milk or 1% white milk, additional milk \$.30.

Juice is available for students that have milk allergies with a current doctor's note. If a doctor's note is not received there will be a \$.40 charge per juice. The note may be given to the school secretary.

Lunch Prices

Grades K - 5	\$2.00
Grades 6 - 8	\$2.25
Grades 9 - 12.....	\$2.50
Adults.....	\$3.00

Parents are encouraged to come and enjoy lunch at any of the cafeterias.

Lunch Payment Policy

Please make a deposit to your students lunch account at the time of registration.

Free and Reduced Lunch Applications are available at each schools office and at the District Office.

You must apply each year even though you have qualified the previous school year. To assure prompt processing of your application make sure the application is complete and accurate. We are not allowed to process incomplete applications. If you have questions concerning deposits, lunch balances or Free & Reduced Lunch Applications please call Candy Green at 786-4100 ext.4106.

Asbestos Update

Asbestos is an issue we have been dealing with for several years. The Asbestos Hazard Emergency Response Act of 1986 (referred to as AHERA), was enacted by congress. AHERA was enacted to determine the extent of and to develop solutions for any problems schools may have with asbestos.

Uinta County School District Number Six facilities have been inspected by a certified asbestos inspector, as required by AHERA. The inspector located, sampled, and rated conditions and hazards potential of materials in our facilities suspected of containing asbestos. The inspection and laboratory analysis records were used by our own AHERA certified staff.

An Asbestos Management Plan for each school or facility has been developed and is available for your inspection at the District Office during regular office hours. In addition, a copy of the Asbestos Management Plan is available for your review at each of our schools.

The district complies with or exceeds Federal and State Regulations regarding asbestos. The district will take whatever steps are necessary to insure that your children and our employees will have a healthy and safe environment in which to learn and work. In addition, three (3) year re-inspections have been performed on all sites since 1992.



Calendar Pages Inserted here

Uinta County School
District #6
P.O. Box 1090
Lyman, Wyoming 82937
(307) 786-4100

Bulk Rate
U.S. Postage Paid
Permit No. 13
Zip Code 82937

Hathaway Scholarship

The State of Wyoming has established a generous scholarship program that rewards eligible Wyoming students with scholarship money to attend the University of Wyoming or a Wyoming community college. The program provides merit- and need-based awards to eligible students. For more information contact Lyman High School
(307) 786-4100 ext. 5101.

Postal Patron